

iTools with Wizards



Configuration, Data Logging, Mini SCADA, Communication and Monitoring Software

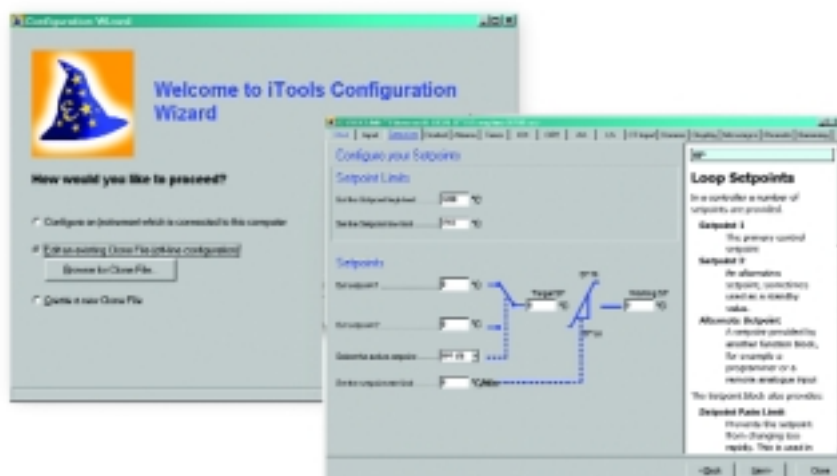
Features:

- configuration with Wizards to help the user
- graphical wiring editor
- cloning
- PC based User Screens - Mini SCADA
- data logging and trending
- setpoint program editor
- process monitoring
- OPC server
- remote connection

iTools is a versatile suite of software tools to allow configuration and monitoring of all Eurotherm 2000 and 3000 Series Controllers and the T630 Process Controller. It also provides runtime monitoring of the 5000 Series graphical recording and data management units. It is capable of editing, storing and 'cloning' complete controller configurations as well as setting up data logging, process monitoring and Ethernet and modem connections.

Configuration Wizards

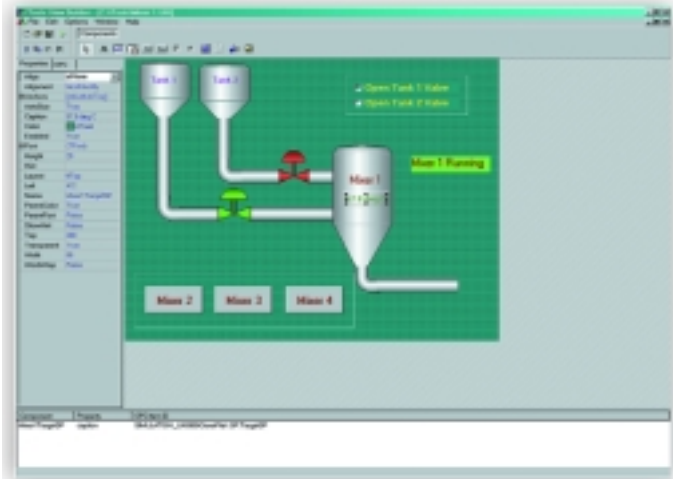
Wizards are a powerful new tool in iTools Version 5. They are used to simplify the configuration of products for the user. Wizards guide the user through the device configuration process with interactive help and graphical demonstrations of configuration options. Advanced users and OEMs can also create their own wizards using the View Builder option so that this standard software can become a process specific tool.



View Builder

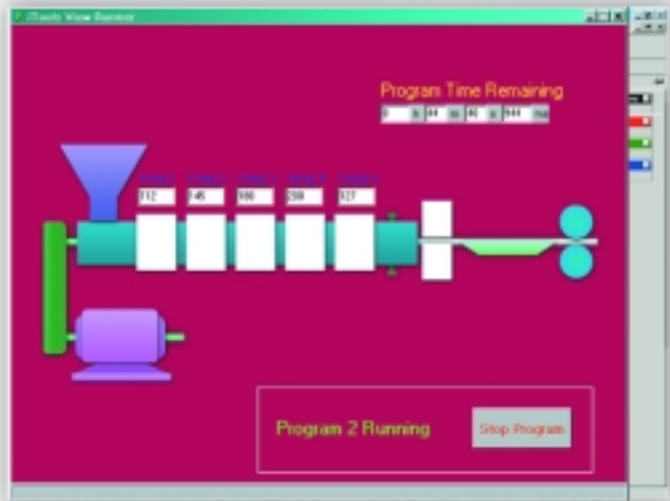
View builder allows users to create PC based customised or Mini SCADA screens for simple process monitoring, commissioning and diagnostic to suit their process needs.

- **customised screens**
- **import background images**
- **user buttons to switch between screens**
- **live data monitoring**
- **operator interface to controls**



View Runner

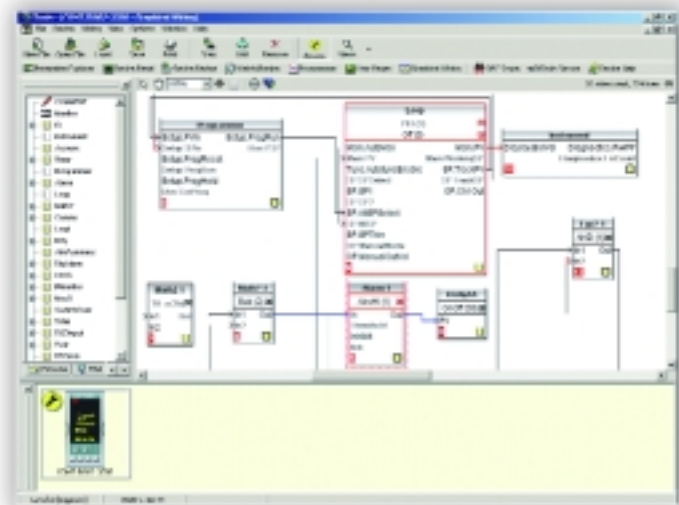
Once a View Builder screen has been created, the View Runner shows live values from the process with interactive buttons as an intuitive operator interface.



Graphical Wiring Editor

- **simple 'Drag & Drop' wiring**
- **pre-configured function blocks**
- **access to real time monitoring**

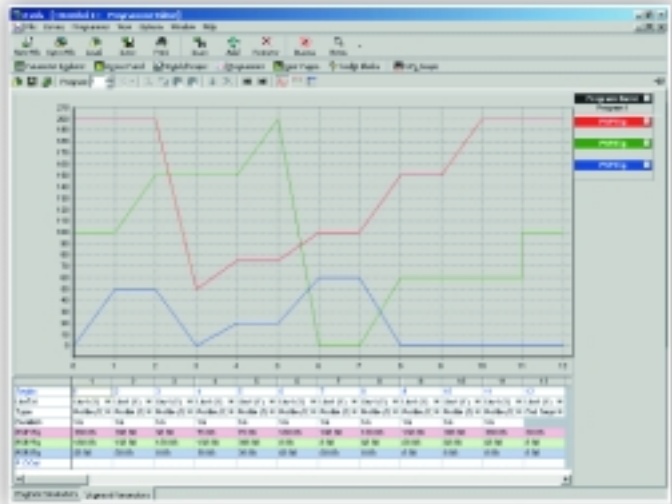
Configuring Eurotherm controllers has never been easier with the Graphical Wiring Editor within iTools. This intuitive tool allows the user to configure the latest Eurotherm controller, the 3500, using a simple drag and drop graphical interface. iTools includes pre-configured function blocks combined with the Graphical Wiring Editor, the user can develop advanced control applications in minutes.



Setpoint Program Editor

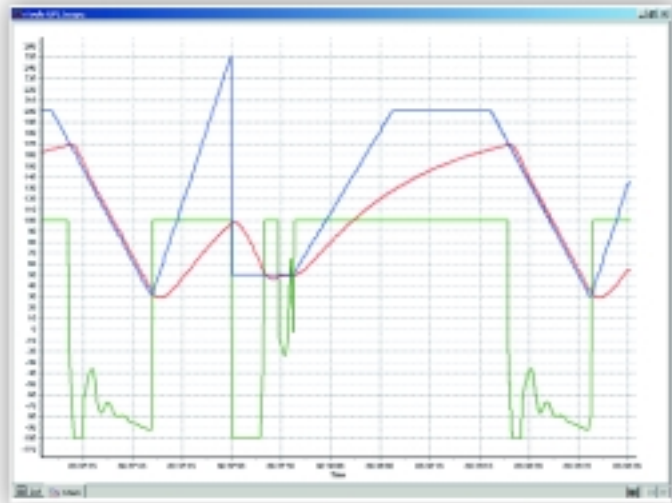
- simple setup of setpoint profiles
- store, retrieve and download program files
- unlimited program storage
- online and offline editing

The Setpoint Program Editor within iTools provides a simple method of configuring setpoint profiles and programmable event outputs. Programs can be edited live - online with the controller, or offline - for download after editing or storage of the profile. Storage of profiles is limited only by the amount of disk space available at the PC.



Trending

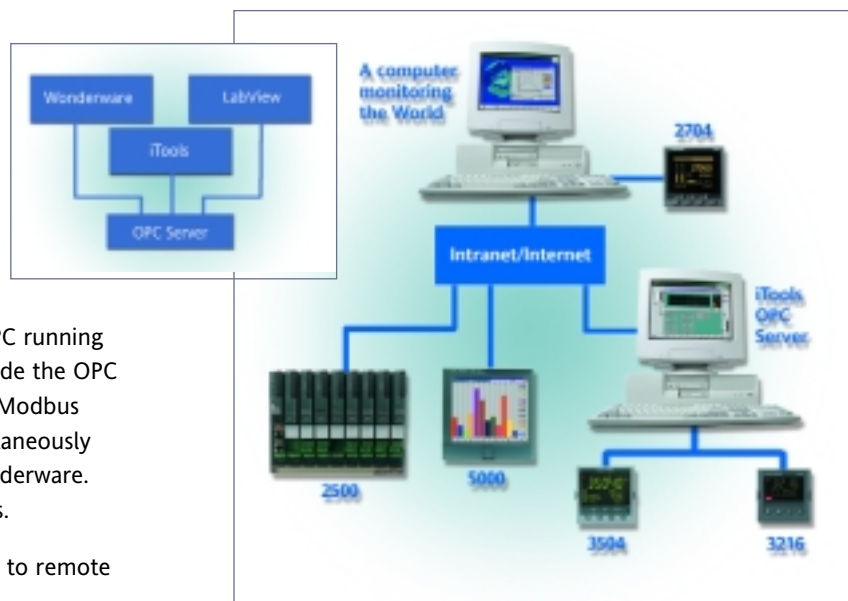
iTools provides a trending and data logging option using OPC Scope. The user can trend and view live data, with a scaleable time axis between 1 minute and 1 month. This utility also offers a Historical Review mode and data can be logged onto the PC hard disk, from which it may be retrieved and analysed in an Excel spreadsheet.



OPC Server

The OPC Server can connect to remote instrumentation via the internet and read and write values to supervisory packages such as Wonderware or LabVIEW.

- Use Modbus TCP to connect directly to Ethernet enabled products
- Use Modbus TCP to connect to a remote PC running the iTools OPC server as a slave. In this mode the OPC server is acting as a Modbus TCP to Serial Modbus converter. This local OPC Server will simultaneously support local clients such as iTools or Wonderware. This connection will work through firewalls.
- Use OPC with Microsoft DCOM to connect to remote PC's via the Intranet



Order code



- 1 iTools**
Supplied on CDCD
- 2 Configuration Kit**
None (CD only)NONE
3000 Series Configuration Kit (with clip and cable)3000CK
3000 Series Configuration clip with cable (no PSU)3000CC
3500 infra red port Configuration kit (UK power connector)3500IR
3000 Series Configuration clip (international PSU only)3000PSU
2000 Series Configuration kit (UK power connector)2000UK
2000 Series Configuration kit (European power connector)2000EU
2000 Series Configuration kit (USA power connector)2000US
2500 Series Configuration kit (European connector)2500EU
2500 Series Configuration kit (USA power connector)2500US
2500 Series Configuration kit (no power connector)2500NC
2500 Series Configuration kit (UK power connector)2500UK
- 3 Configuration Software**
Configuration software enabled (includes integrated Setpoint
Programmer Editor)STD
Configuration software disabledNOCONF
- 4 OPC Server**
StandardSTD
Open OPC Server for use with 3rd party software
(e.g. Wonderware)OPC
- 5 Trending and Logging (OPC Scope)**
NoneNOTREND
Trend displays enabled (OPC Scope)TREND
- 6 View Builder**
NoneNOVIEW
View Builder enabledVIEW
- 7 Trending and Logging (OPC Scope)**
NoneNOSPE
Standalone setpoint programmer editorSPE

Example order code:

ITOOLS/CD/3000CK/STD/STD/TREND/VIEW/NOSPE

EUROTHERM LIMITED UK

Faraday Close Durrington Worthing BN13 3PL
United Kingdom
Tel. +44 (0)1903 205277 Fax +44 (0)1903 236465
Email info@eurotherm.co.uk
www.eurotherm.co.uk

EUROTHERM US

741-F Miller Drive Leesburg VA 20175-8993
Tel. 1-703-443-0000 Fax 1-703-669-1300
Email info@eurotherm.com
www.eurotherm.com

EUROTHERM WORLDWIDE

For contact details in other countries
please use:
www.eurotherm.co.uk/contact.asp

© Copyright Eurotherm Limited 2002

All rights are strictly reserved. No part of this document may be reproduced, modified, or transmitted in any form by any means, nor may it be stored in a retrieval system other than for the purpose to act as an aid in operating the equipment to which the document relates, without the prior written permission of Eurotherm limited.

Eurotherm Limited pursues a policy of continuous development and product improvement. The specifications in this document may therefore be changed without notice. The information in this document is given in good faith, but is intended for guidance only. Eurotherm Limited will accept no responsibility for any losses arising from errors in this document.

